

**HABITAT FOR HUMANITY
 BURNETT ESTATES SUBDIVISION
 PALMER STREET, GREEN COVE SPRINGS, FLORIDA**

**SITE
 GEOMETRY
 PLAN**

© Fleming Island Engineering 2004. Copyright, Fleming Island Engineering, 2004. All rights reserved. No part of this work may be used, reproduced, distributed, displayed or otherwise communicated in any form or by any means without the prior, written consent of Fleming Island Engineering.

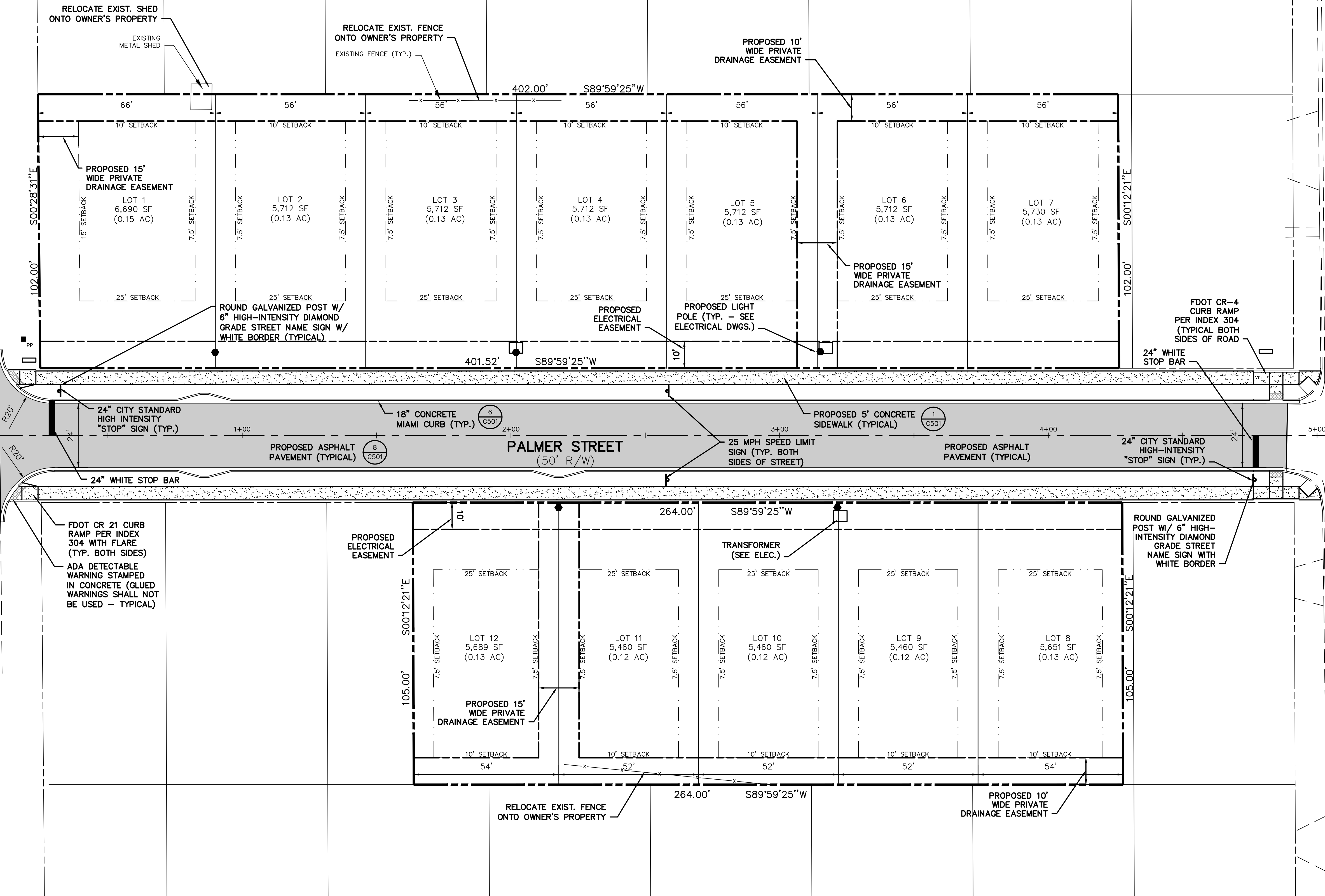
REV.	DATE	BY	DESCRIPTION
O	8-26-09	BJF	CONSTRUCTION ISSUE
D	6-25-09	BJF	REVISED CITY REVIEW
C	9-18-07	MJP	REVISED CITY REVIEW
B	8-14-07	MJP	GREEN COVE SPRINGS REVIEW
A	7-23-07	MJP	SJRWMD REVIEW

JOB NO. **07106**
 DRAWN: **MJP**
 CHECKED: **MJP**
 SCALE: **1" = 20'**
C101
 DRAWING NO.

ROBERT STREET
(50' R/W)

CITIZEN STREET
(50' R/W)

PALMER STREET
(50' R/W)



NOTE: SIDEWALKS WILL BE CONSTRUCTED AS EACH LOT IS DEVELOPED.
 SIDEWALK SHALL BE 6" THICK AT ALL DRIVEWAY CROSSINGS.

